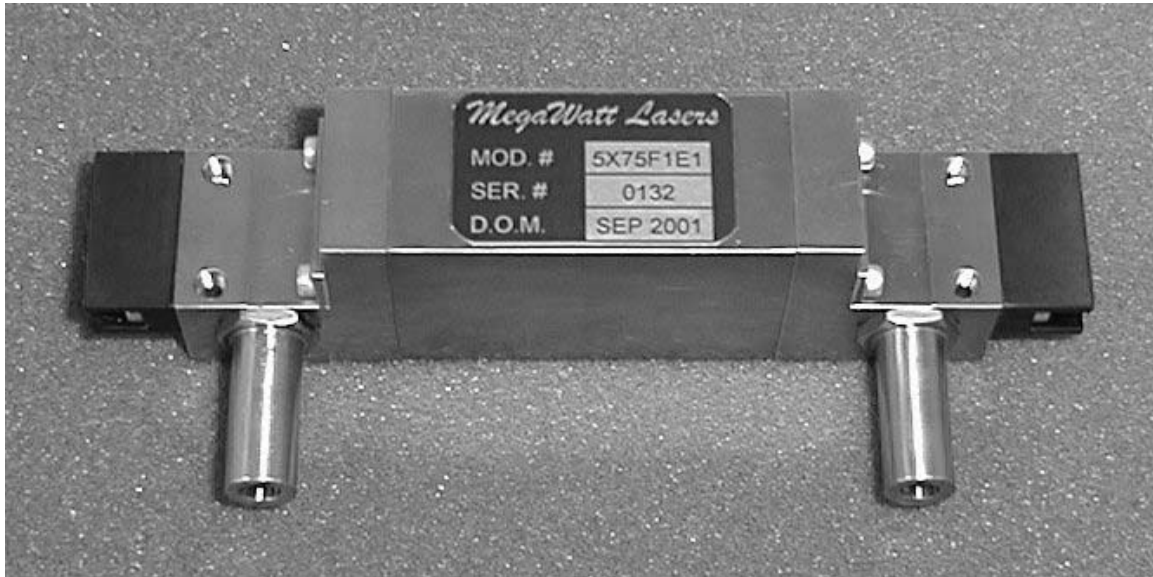
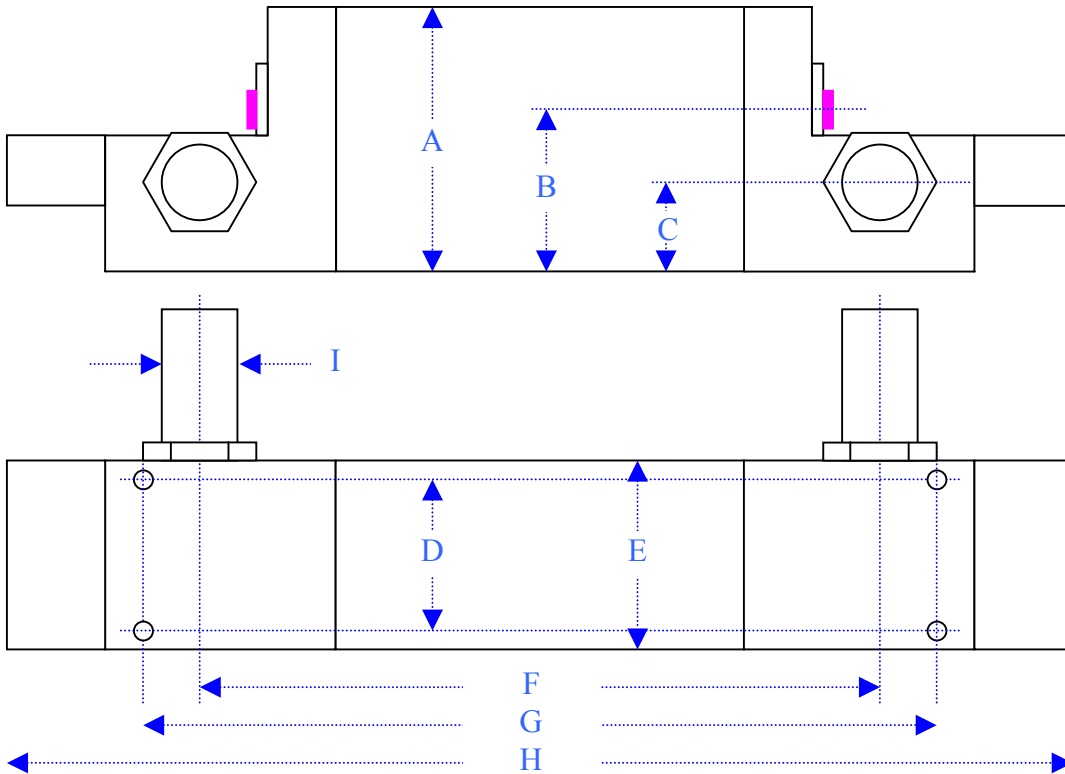


Single Flashlamp Solid-State Laser Pumping Chambers



- Configurations Available for all CW and Pulsed Solid-State Laser Media
- Close-Coupled Diffuse Reflector Design for Highest Efficiency and Pump Uniformity
- Radially Uniform Coolant Flow Reduces Aspheric Thermal Lensing in High Average Power Applications
- Available with Quartz and Fluorescent Converting Doped Glass Filter Tubes
- Multi-Rod, Multi-Lamp Configurations
- Constructed from Materials that are Compatible with High Purity Coolants
- Standard, Custom, and OEM Configurations are Available



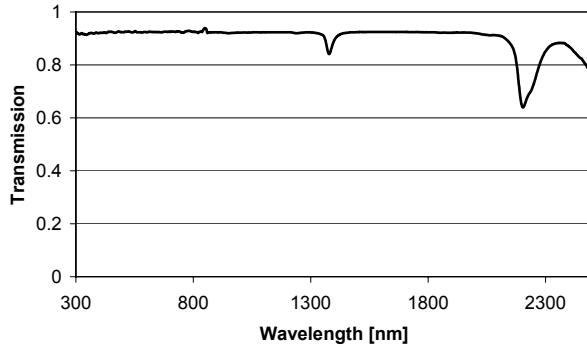
Single Flashlamp Solid-State Laser Pumping Chambers
Dimensions in millimeters

Model	A:	B:	C:	D:	E:	F:	G:	H:	I:*
3X50	34.0	20.5	11.8	18.0	25.0	65	80	116	φ10.0
3X75	34.0	20.5	11.8	18.0	25.0	90	105	141	φ10.0
4X75	34.5	21.0	11.8	18.0	25.0	90	105	141	φ10.0
4X100	34.5	21.0	11.8	18.0	25.0	115	130	166	φ10.0
4X125	34.5	21.0	11.8	18.0	25.0	140	155	191	φ10.0
5X75	35.0	21.5	11.8	18.0	25.0	90	105	141	φ10.0
5X100	35.0	21.5	11.8	18.0	25.0	115	130	166	φ10.0
5X125	35.0	21.5	11.8	18.0	25.0	140	155	191	φ10.0
5X150	35.0	21.5	11.8	18.0	25.0	165	180	216	φ10.0

Other sizes available.

* - Pump chambers sold to customers in the United States will be equipped with 0.375” (9.53 mm) diameter coolant ports. Add suffix “-M” if 10 mm diameter coolant ports are desired in the US.

Synthetic Fused Silica

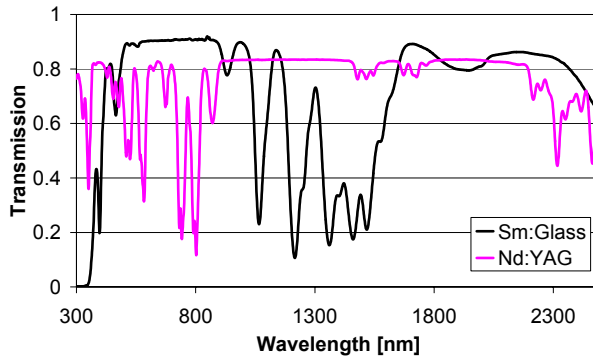


Synthetic Fused Silica

Recommended for use with high peak power laser media that is not susceptible to UV solarization. (Er:YAG, CTH:YAG, Cr-Nd:GSGG, Ruby, Er:Glass, etc.)

Suffix: None

Sm Filter Glass

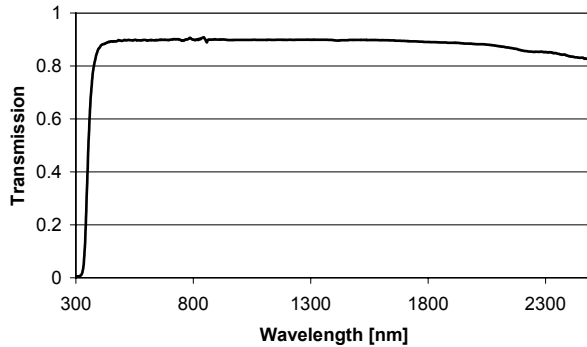


Strengthened Samarium Doped Silicate Glass

Recommended for use with Nd:YAG

Suffix: F1

Silicate Glass



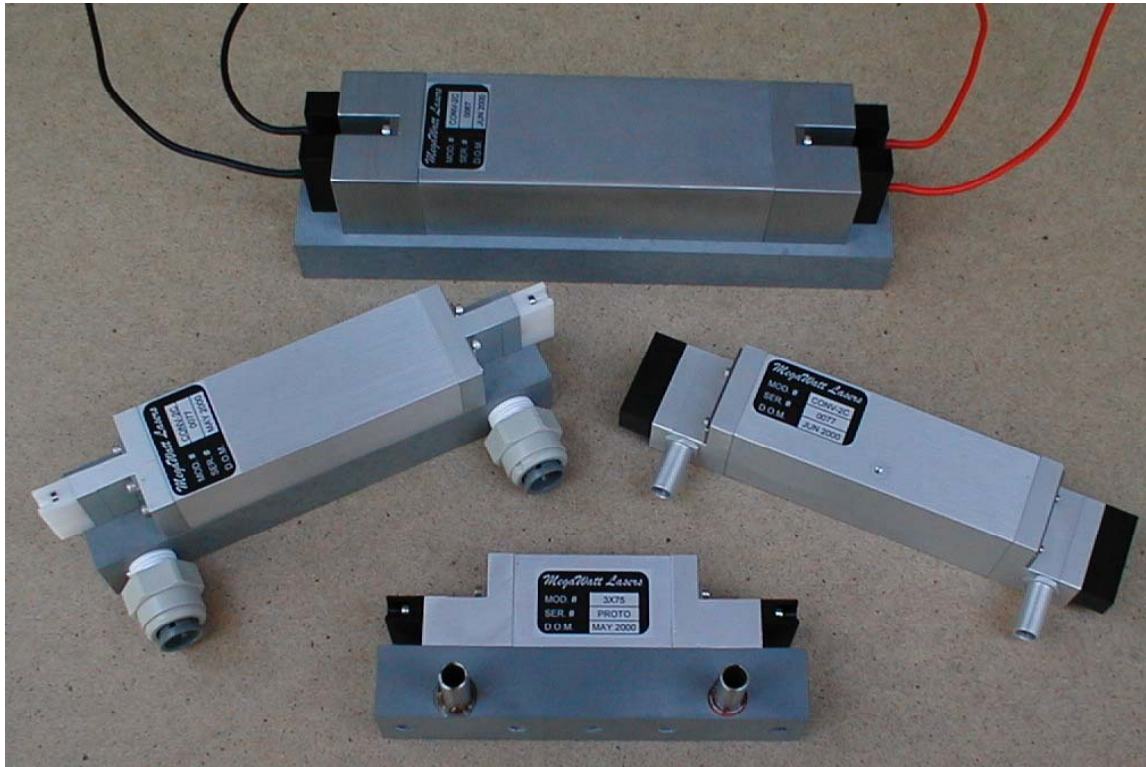
Strengthened Clear Silicate Glass

Recommended for use with low peak power lasers (This material is somewhat UV solarization susceptible)

Suffix: F2

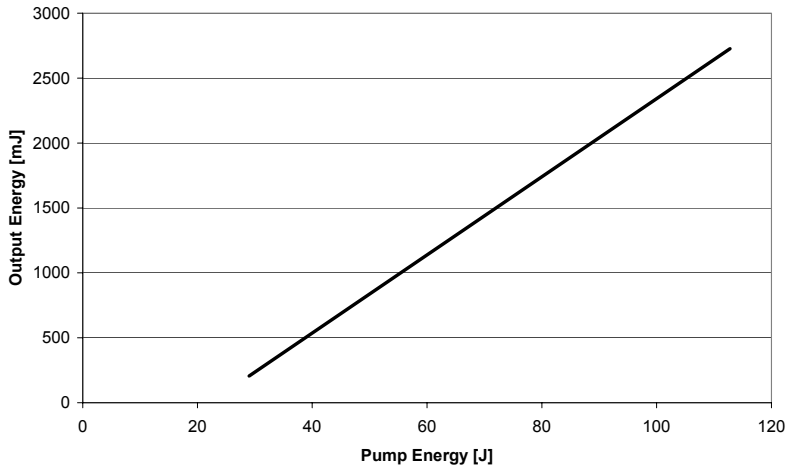


Custom Pump Chambers for a Medical Application
Using 4 mm ϕ X 127 Cr, Tm, Ho:YAG Laser Rods



From Top: 6.4X150C1F3 Pump Chamber for Alexandrite, 4X125C3 Pump Chamber for Dual CTH:YAG Rods, Custom Design for 4 mm ϕ X 127 mm CTH:YAG, and 3X75C2 Prototype Pump Chamber for Er:Glass

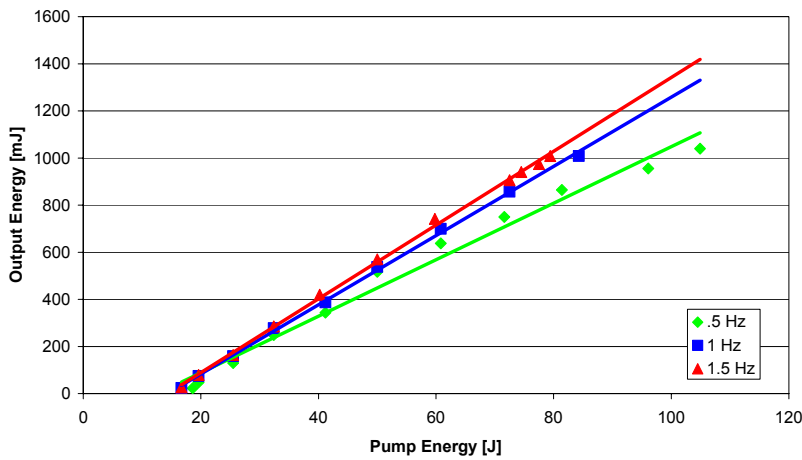
4 mm X 4" Er:YAG Pump Chamber



Model 4X100

Er:YAG 2.94 μ m
 80%R Output Coupler
 25 °C Coolant
 10 Hz
 3.0% Slope Efficiency

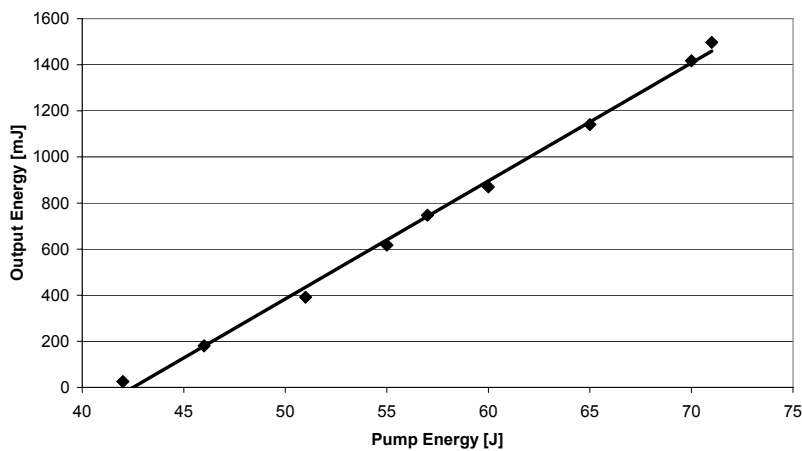
Er:Glass



Model 3X75

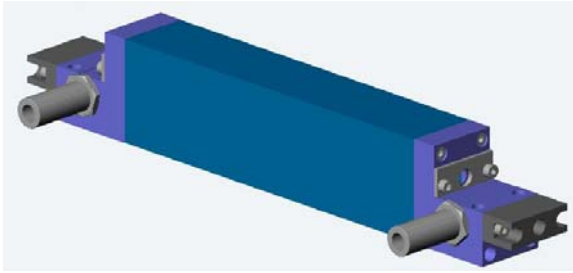
Er:Glass 1.535 μ m
 80%R Output Coupler
 25 °C Coolant
 Uncoated Rod

4X125 CTH:YAG



Model 4X125

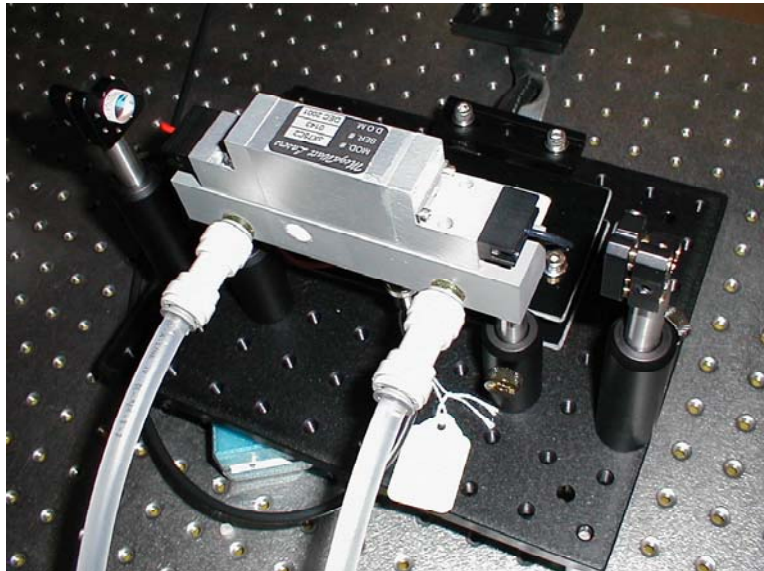
Cr,Tm,Ho:YAG 2.1 μ m
 75%R Output Coupler
 25 °C Coolant
 10 Hz
 5.1 % Slope Efficiency



MegaWatt Lasers manufactures high quality laser pump chambers for a variety of laser applications covering all solid-state laser wavelengths. Our Pump chamber designs provide unsurpassed performance, reliability and leak integrity to meet the demanding needs of your laser system design. Through many years'

experience, we have optimized our pump chamber designs to provide features such as high efficiency diffuse reflectors and symmetric radial cooling. Standard pump chambers can be delivered off-the-shelf while the modular design allows for cost effective custom solutions. Contact us today to learn more about improving your performance and reducing cost of your solid state pump chamber needs!

MegaWatt Lasers
P.O. Box 24190
Hilton Head Island, SC 29925-4190
843-342-7221 Phone
843-342-7223 Fax
shamlin@hargray.com



Western United States

Scott Soden
Quantum Marketing, Inc.
155 East Campbell Ave. #130
San Jose, CA 95008
408-364-0160 Phone 408-364-0164 Fax
info@quantummarketing.com

Israel

Meir Chazon
R.M. Photonics Ltd.
P.O. Box 1507 Ramat Modiim D.N.
Modiin 73127, Israel
972-8-9265733 Phone 972-8-9262021 Fax
rmphoton@inter.net.il