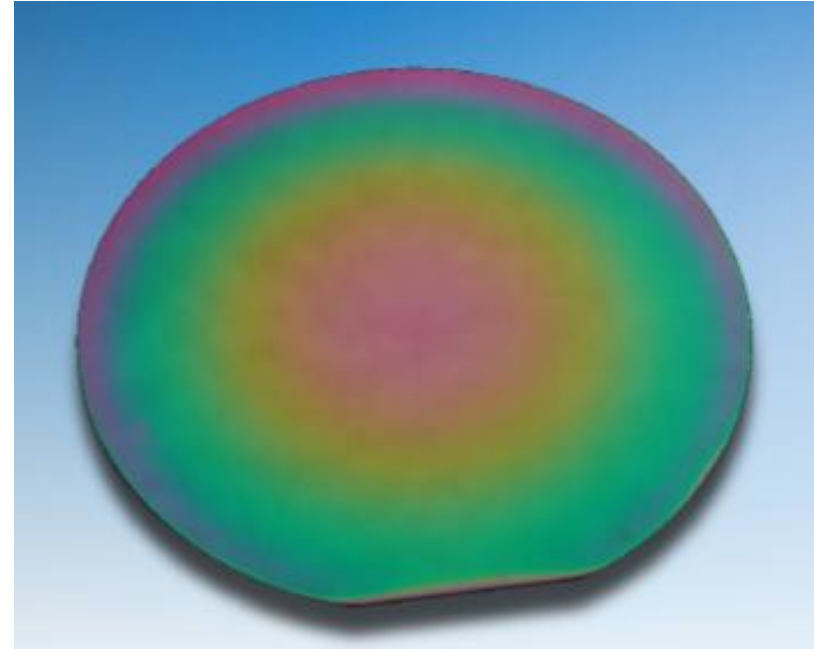
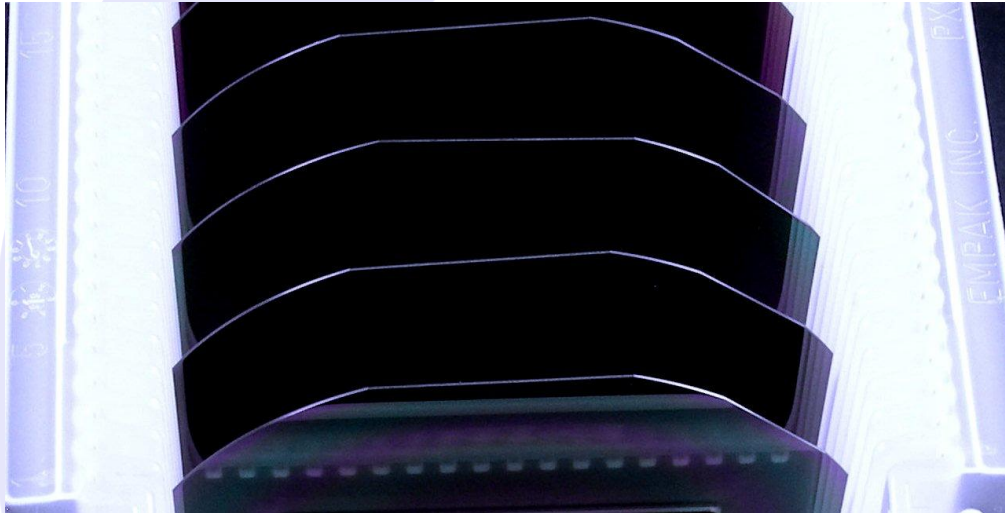


Kyma AlGaN Templates

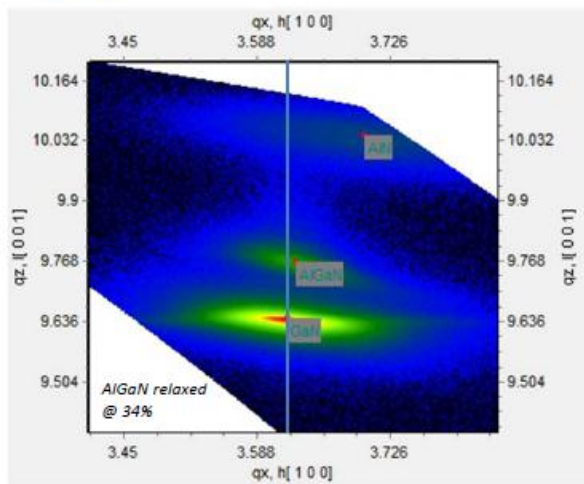


Template Specifications

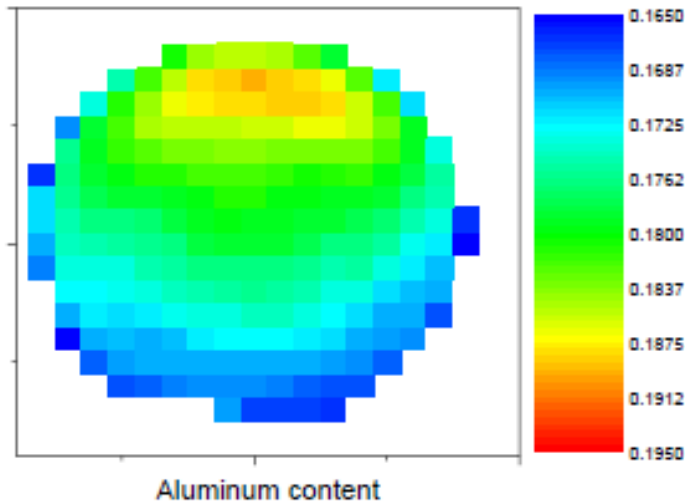
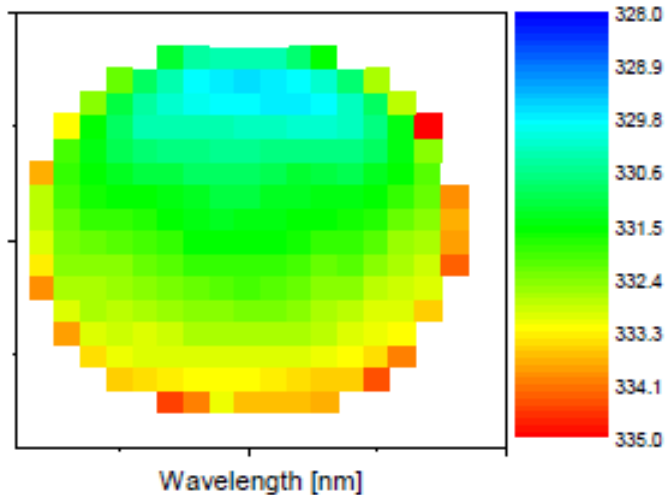
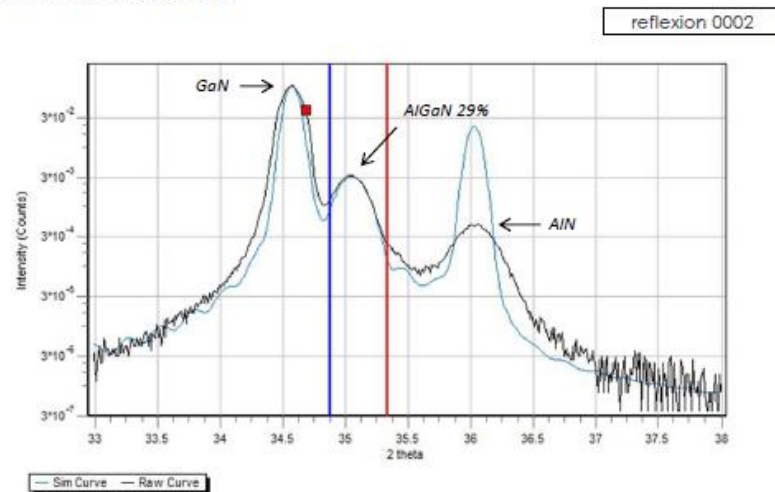
Available Doping	Si-doped (N+)	Undoped (N-)	P-type
Carrier Concentration	$>1 \times 10^{18} / \text{cm}^2$	$>1 \times 10^{17} / \text{cm}^2$	$>1 \times 10^{17} / \text{cm}^2$
Front surface finish	As-grown		
Available Buffer Layers	AlN, GaN		
Available Substrates	Sapphire, Silicon, SiC		
Available Sizes	2-4"		
Available Al %	10% up to 90%		

AlGaN Properties

X-Ray Diffraction : Reciprocal mapping



X-Ray Diffraction : 002 2Theta-Omega



For more information contact Kyma at:

919.789.8880 (phone)

919.789.8881 (fax)

sales@kymatech.com