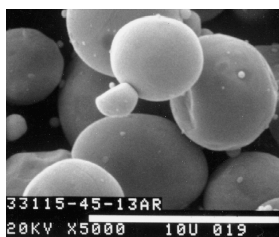


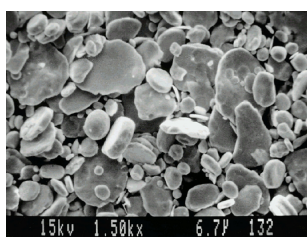
CuLox 社/球状・フレーク銅粉及び銀粉

CuLox 球状銅粉										
MATERIAL	CHEMISTRY (PPM MAX)								SIZE**	
	Oxygen***	Carbon	Lead	Zinc	Tin	Silicon	Nickel	Aluminum	Median micron	Aim micron
SPHERICAL										
CuLox 6010*	Report	Report	200	250	200	150	200	100	0.75-1.75	1.25
CuLox 6020	Report	Report	200	250	200	150	200	100	1.75-3.25	2.75
CuLox 6030	6,500	500	200	250	200	150	200	100	3.25-4.75	4.25
CuLox 6050	6,500	500	200	250	200	150	200	100	4.75-6.75	5.75
CuLox 6080/6100	6,500	500	200	250	200	150	200	100	7.5-13.5	10
CuLox 6200	6,500	500	200	250	200	150	200	100	15-25	20
CuLox II 銅粉										
SPHERICAL										
CuLox 6005c	Report		500	250	500	50	250	100	0.5-1.0	
CuLox 6010c	6000		500	250	500	50	250	100	1.0-2.0	
CuLox 6020c	4500		500	250	500	50	250	100	2.0-3.0	
CuLox 球状銀粉										
SPHERICAL										
CuLox 0010	99.9% purity								0.25-1.0	
CuLox 0020	99.9% purity								0.5-2.0	
CuLox 0030	99.9% purity								1.25-3.5	
CuLox フレーク銅粉****										
FLAKED	Oxygen								BET (m ² /g)	
CuLox 6010F	12500 ppm max								1.0-3.5	
CuLox 6030F	12500 ppm max								0.20-0.65	
CuLox 6050F	12500 ppm max								0.10-0.50	
CuLox 6080F	12500 ppm max								0.10-0.50	
CuLox 6100F	12500 ppm max								0.10-0.50	
CuLox 6200F	12500 ppm max								<0.30	
CuLox 6300F	12500 ppm max								<0.30	

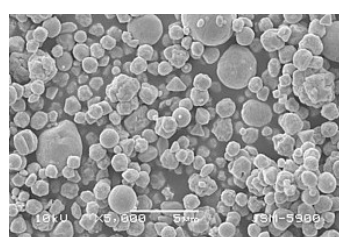
Typical SEM Photos



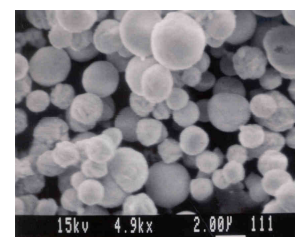
CuLox 6030



CuLox 6030F



CuLox 6010c



CuLox 0020

*Limited Supply

**All Particle Size Analysis to be done by Microtrac.

***Oxygen content of the powders and flakes can be controlled per customer request.

****Surface Area of the flake can be controlled per customer requirements.

For all flakes, CuLox uses our standard spherical grades as feedstock.

お問い合わせは、

日本総代理店 株式会社ニューメタルスエンドケミカルスコーポレーション

電子材料部/水戸 E-mail: mmito@newmetals.co.jp Tel:06-6202-5108 Fax:06-6223-0987